



European Studies on Gender Aspects of Inventions- Statistical Survey and Analysis of Gender Impact on Inventions

ESGI

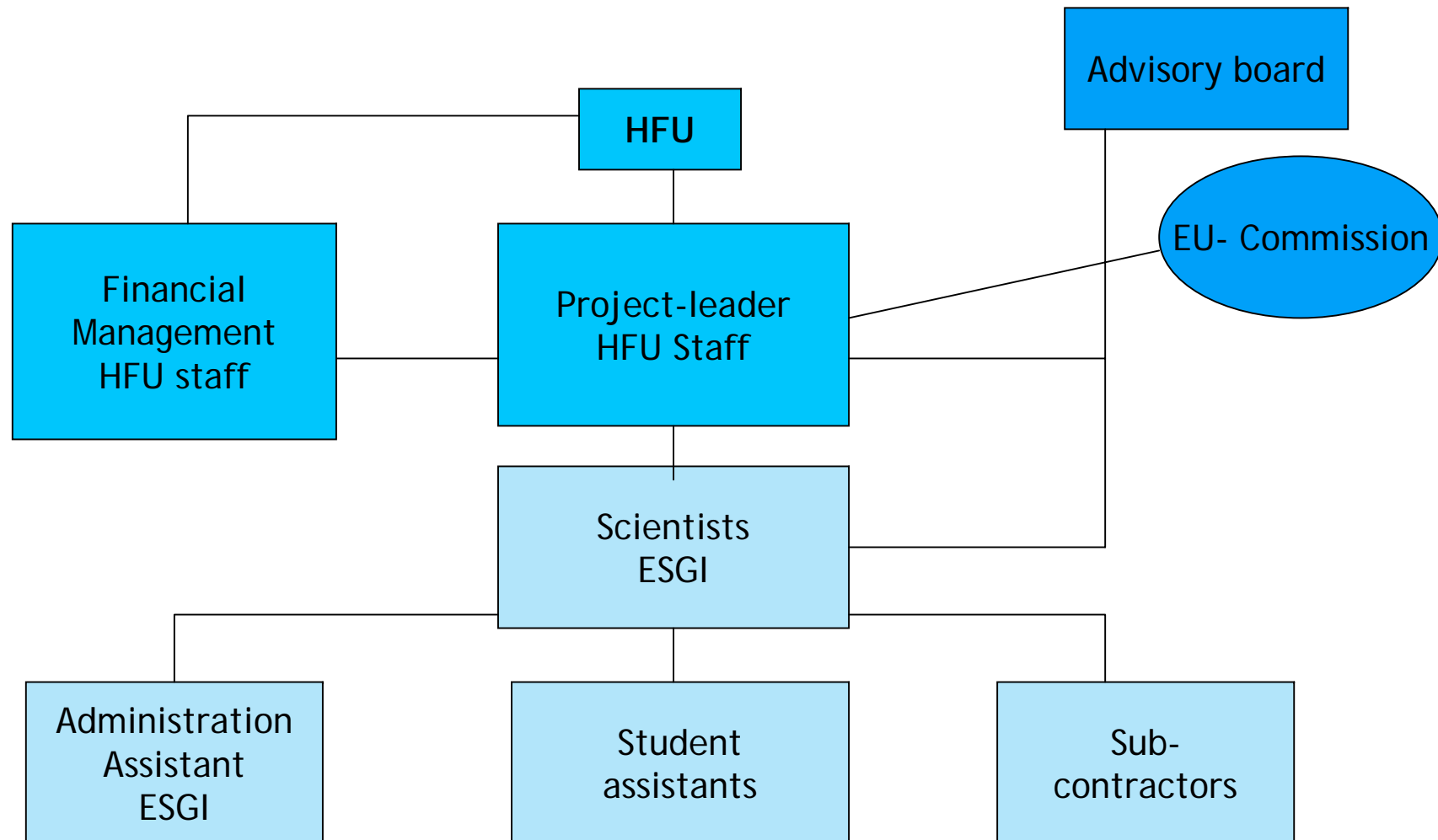


EU SIXTH FRAMEWORK PROGRAMME
Science and Society

Structuring the European research Area



Management structure of the ESGI Project





Staff

Project leader

Prof. Dr. Ulrike Busolt (Physicist)

Scientists

Kordula Kugele (Social behaviour scientist M.A.): Data Analysis

Iris Tinsel (Sociologist M.A.): Online Survey

Scientific assistant

Antje Konrad

Students



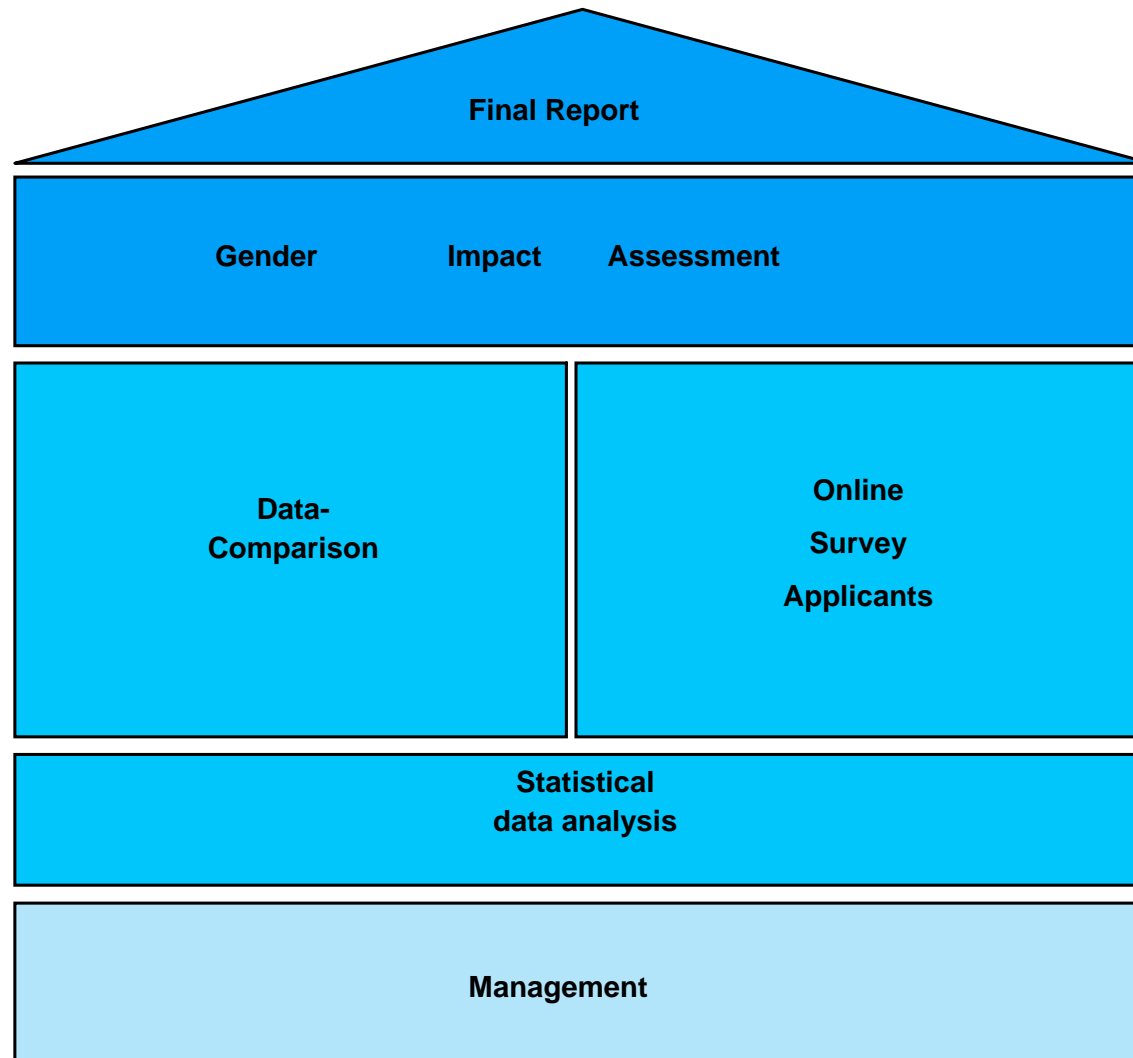
Project Objectives

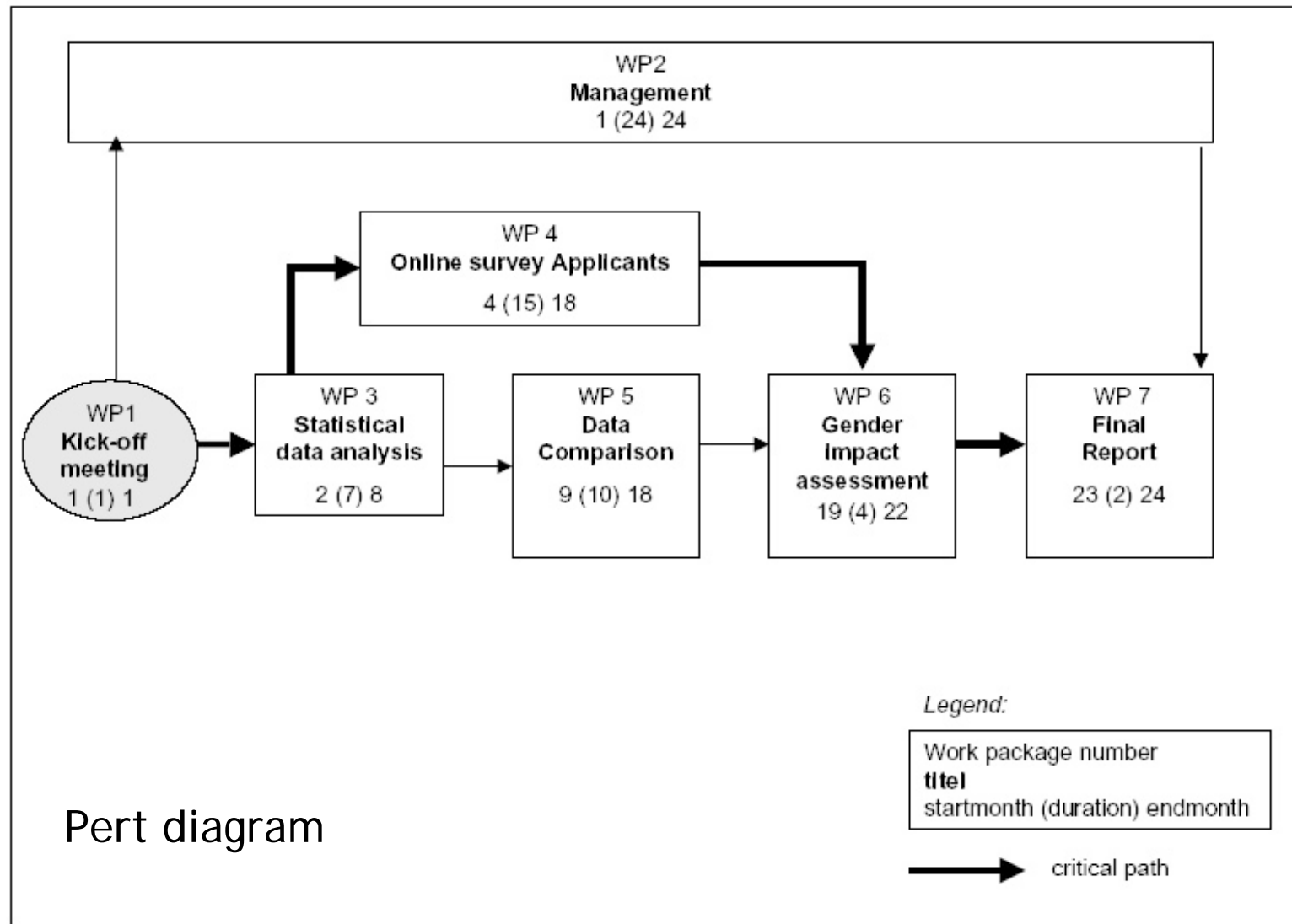
Study on the participation of women in inventive activities and patent matters in the 25 EU-member states

- Data analysis: Participation of women in patent applications at EPO 2002-2004
- Data comparison: a.) Proportion of women in science and technology and patenting b.) Temporal development
- Online survey: Representative online-questioning of 1500 patent applicants
- Data comparison between all 25 EU-States
- Gender Impact Assessment: Gender impact on invention activities
- Final Report



Project
Structure







Dissemination of knowledge

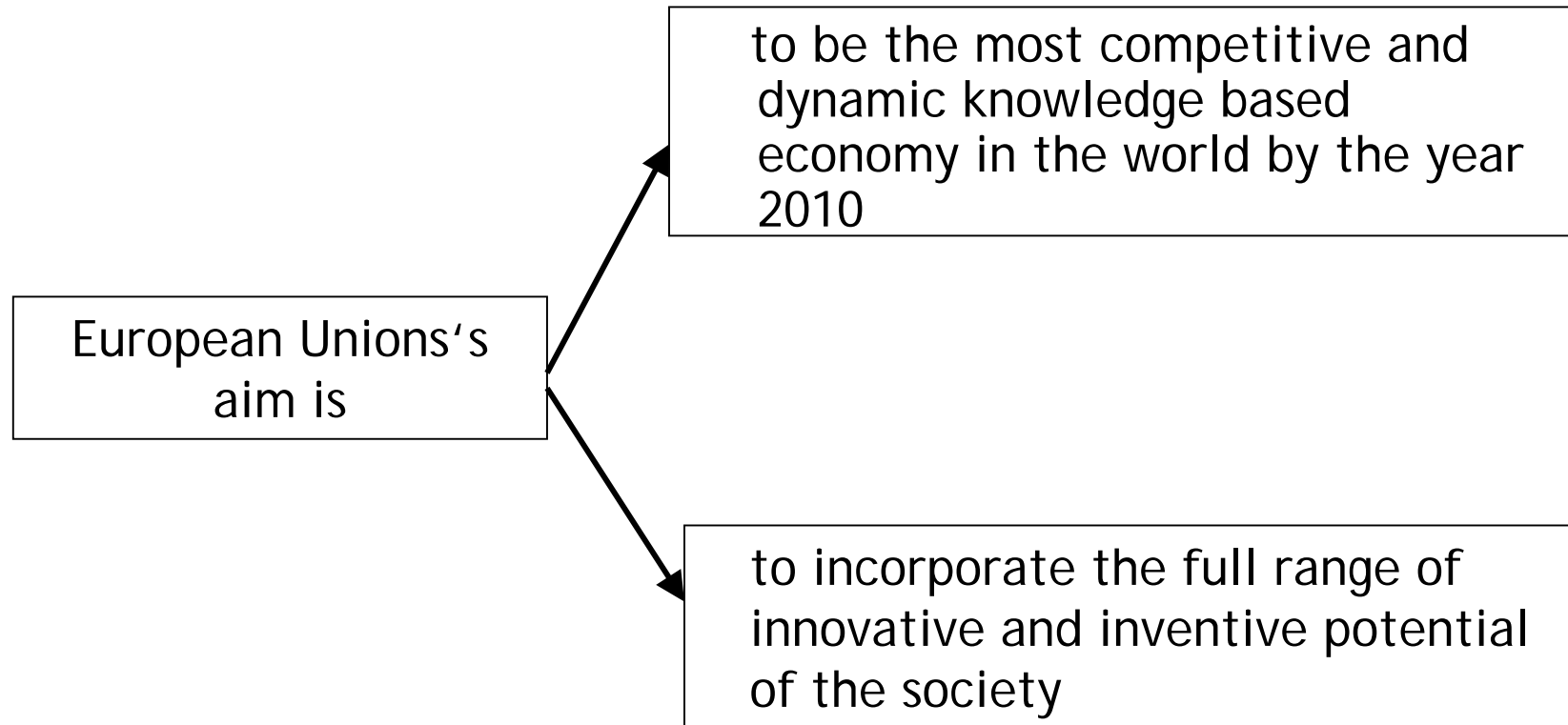
Tasks of ESGI:

Dissemination of knowledge by presentations and publications of

- all results
- the final report with its recommendations to promote gender equality in the S&T professions and inventions



State of the art





State of the art

